

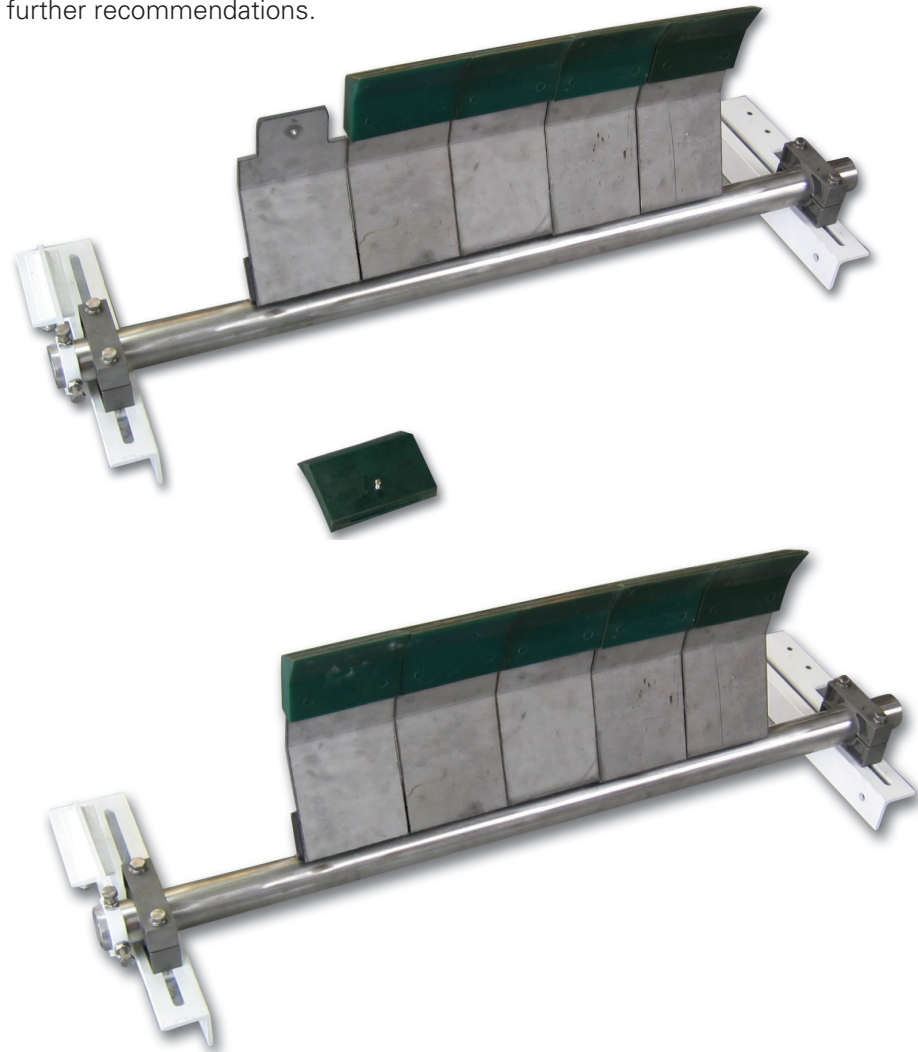
TS30 Primary Scraper

The simple mounting method of the TS30 scraper provides for easy installation and chute modification is kept to a minimum. Special design features have been incorporated into this scraper with the maintenance person being the key to the scraper's successful operation.

KEY BENEFITS

- The blade installation system: No tools are necessary for the installation or removal of the polyurethane blades. They simply slip over a 'tongue' that is part of the buffer.
- Material does not become easily lodged between the pulley and the loading buffer as is the case with brace type systems used with many primary scrapers. The result of this lodged material is that a wedge effect occurs where the blades can be pushed away from the pulley face; losing any cleaning effect they previously had.
- The inclusion of a stop to prevent the scraper going past its maximum worn position. As an option, we can supply an internal cradle on which the scraper is supported during removal and subsequent replacement. This allows the maintenance person to remove the scraper through the chute opening without the need of supporting the scraper from above or entering the chute from below.

The scraper has been designed to operate on a flat face pulley and on uni-directional belts. If you have a bi-directional belt or a crowned pulley, consult the manufacturer for further recommendations.



INSTALLED POSITION

The moulded buffers form the pivot between the scraper blades and the scraper tensioning mechanism. They have been designed to withstand impact and will return very quickly to their correct cleaning location. The pivot point, which is the centre of the moulded rubber buffer, must be located such that the scraper blade will rotate away from the pulley if the blade was to hit any protrusion on the belt. The primary scraper should be used in conjunction with a secondary scraper if good cleaning is to be achieved.

WEEKLY INSPECTION

A VISUAL INSPECTION SHOULD BE MADE ON A WEEKLY BASIS.
THE AREAS TO INSPECT ARE:

1. Unacceptable signs of carry back (may require removing scraper and re-aligning blades)
2. Blades not in contact with the belt or vibrating (Re-adjust the scraper to correct this problem)
3. Check for wear of the blade relative to the worn indicator moulded into the blade and program for a change where necessary
4. Check all rubber buffers for damage and replace as necessary
5. Blockage of chute or build-up of material on or around the scraper (clean when necessary)

MONTHLY INSPECTION

The complete scraper should be removed, inspected and repaired as necessary then reinstalled and re-tensioned.

ANSQUIP PTY. LTD.

ACN 006 643 554 / ABN 48 879 350 972

POSTAL ADDRESS

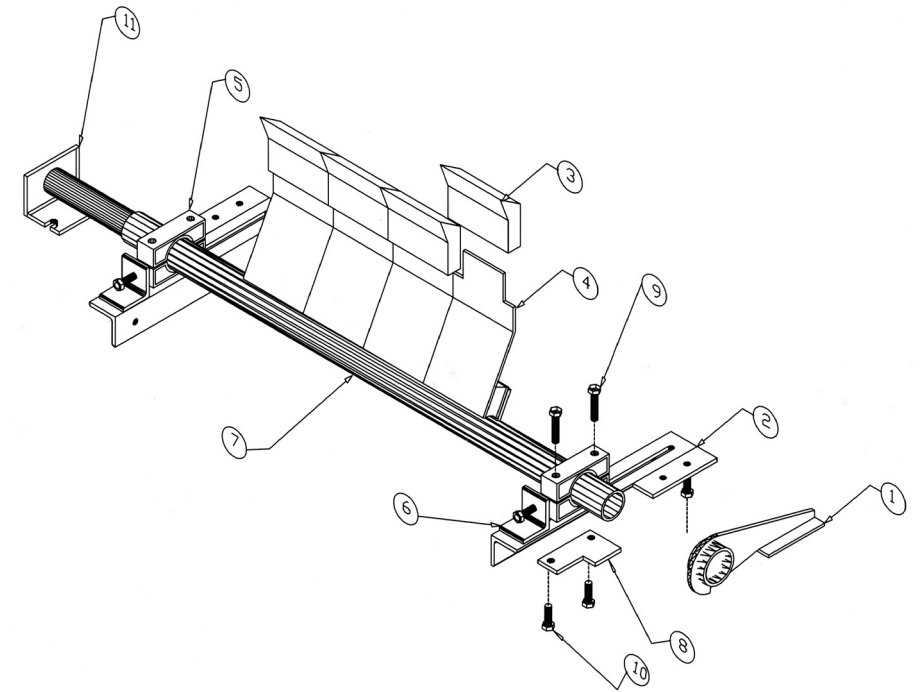
P.O. Box 149, Carnegie
VICTORIA AUSTRALIA 3163

DISTRIBUTED BY



TS30 Primary Scraper

INSTALLATION AND MAINTENANCE INSTRUCTIONS



PARTS LIST

- | | |
|---|---|
| 1. TORQUE ARM
• One (1) per assembly | 7. SCRAPER SUPPORT PIPE
(Stainless Steel) |
| 2. SUPPORT BRACKET | 8. LOCKING STOP |
| 3. SLIP-ON BLADE | 9. MOUNTING CLAMP LOCKING BOLTS
(Grade 304 Stainless Steel) |
| 4. TENSIONING BUFFER | 10. MOUNTING CLAMP SET SCREW |
| 5. MOUNTING CLAMP
(Grade 303 Stainless steel) | 11. OPTIONAL CRADLE |
| 6. LOCATING ADJUSTOR | |